

THE BIANCO

 3
  2
  2

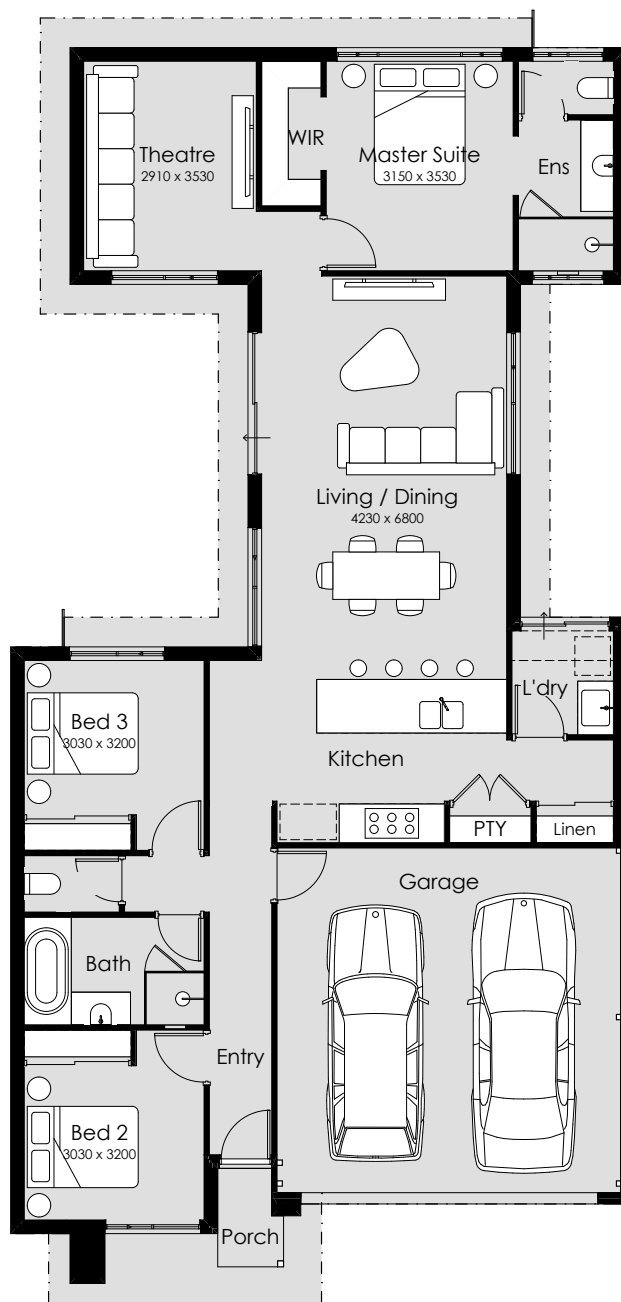


Features:

- ✓ Open plan living
- ✓ Gourmet kitchen
- ✓ Large master suite
- ✓ Walk-in robe
- ✓ Integrated laundry
- ✓ Home theatre

Inclusions:

- ✓ Interior design consultation
- ✓ 30 course ceilings
- ✓ 20mm Essastone benchtops
- ✓ Mitred tiling
- ✓ Semi-frameless hobless showers
- ✓ LED downlights



TOTAL AREA 168.51m²
Perfect for lots 10.5m wide.

BUILT AROUND PEOPLE.

summithomes.com.au



NEW HOMES

RENOVATIONS

GRANNY FLATS

DEVELOPMENTS

THE BIANCO

 3  2  2

BIG ON SPACE AND FUNCTIONALITY.

Sit back and enjoy the natural light streaming through the generous windows surrounding the expansive open plan living and dining area in this compelling design. Overlooking this bright and airy space is the designer kitchen, complete with a island bench and plenty of storage. Outside, the Bianco will inspire you to create your dream garden or lawn area for play and relaxation with its unique u-shape design.

Flanking the light-filled heart of the home are two sleeping zones. Toward the back of the home sprawls the ultimate retreat with a spacious master suite featuring double sized walk-in robe and ensuite, and a generous private theatre just a step away. Take the time to unwind and enjoy some big screen escapism.

Bed two and three feature built-in robes and share a full sized bathroom in an efficient 'jack and jill' design that's both big on space and functionality.

CHOOSE YOUR ELEVATION



summithomes.com.au

*Information correct as of 1 November 2021. Plans may be changed or discontinued without notice.
Please speak to your New Homes Consultant for details. Images are for illustrative purposes only. BC10689.



SUMMIT
HOMES

NEW HOMES

RENOVATIONS

GRANNY FLATS

DEVELOPMENTS