

THE HYLAND



TOTAL AREA 293.61m²
Perfect for lots 12.5m wide.



NOTHING SHORT OF INDULGENT.

The heart of the Hyland is the impressively spacious living area featuring an impeccably designed kitchen with breakfast bar island bench, ample bench space, and concealed walk-in pantry including secondary fridge recess. The double sink, main fridge recess and additional workspace has been cleverly arranged to minimise clutter and maximise convenience. The rest of this huge open plan living area offers seating and eating space that further extends onto a large alfresco area, presenting seamless internal and external living.

After an evening spent in the sprawling living/dining area, you may like to adjourn to the private theatre, also located on the ground floor. And for any extra guests, you can relax knowing there is a dedicated guest room with access to a common bathroom.

When it's time to retreat for the night, you'll discover a well-considered second storey layout, with an enormous master wing that's nothing short of indulgent. As you open the double doors to the master suite, you are greeted with a huge, bright and airy room, extending onto a sizeable private balcony. Double walk-in robes and a generously sized bathroom comprising freestanding bath and separate shower offers a truly enviable place to unwind.



BUILT AROUND PEOPLE.

summithomes.com.au


SUMMIT
HOMES

NEW HOMES

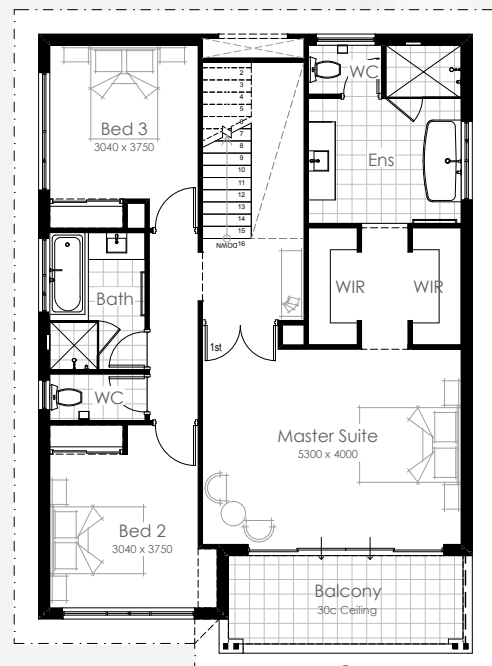
RENOVATIONS

GRANNY FLATS

DEVELOPMENTS

THE HYLAND

 4
  2
  2



TOTAL AREA 293.61m²
 Perfect for lots 12.5m wide.

summithomes.com.au

*Information correct as of 1 July 2021. Plans may be changed or discontinued without notice.
 Please speak to your New Homes Consultant for details. Images are for illustrative purposes only. BC10689.



SUMMIT
 HOMES

NEW HOMES

RENOVATIONS

GRANNY FLATS

DEVELOPMENTS