

THE MONDO



TOTAL AREA 287.76m²
Perfect for lots 10m wide.



BREATHTAKINGLY SPACIOUS.

The Mondo features breathtakingly spacious open plan living seamlessly opening onto a large alfresco area.

The chef in the house could not ask for more with the luxury kitchen featuring ample, uncluttered bench space and designer scullery including walk-in pantry, concealed fridge and freezer recesses and double sink. The scullery also cleverly opens into a laundry space offering a sizable walk-in linen.

After you have spent the time unwinding and dining in the central living area of the home, you can retreat to the theatre room for some big-screen time. For any guests who have joined you, the Mondo also offers a guest bedroom with convenient access to amenities.

Upstairs, the large, light-filled master suite features double walk-in robes, leading into a stylish and spacious ensuite. Bedrooms 2 and 3 offer built-in robes and share a bathroom featuring a bath, shower and separate WC.

The landing area also offers additional common space that could fit a desk or occasional chair, opening onto a balcony to take in the views.



BUILT AROUND PEOPLE.

summithomes.com.au


SUMMIT
HOMES

NEW HOMES

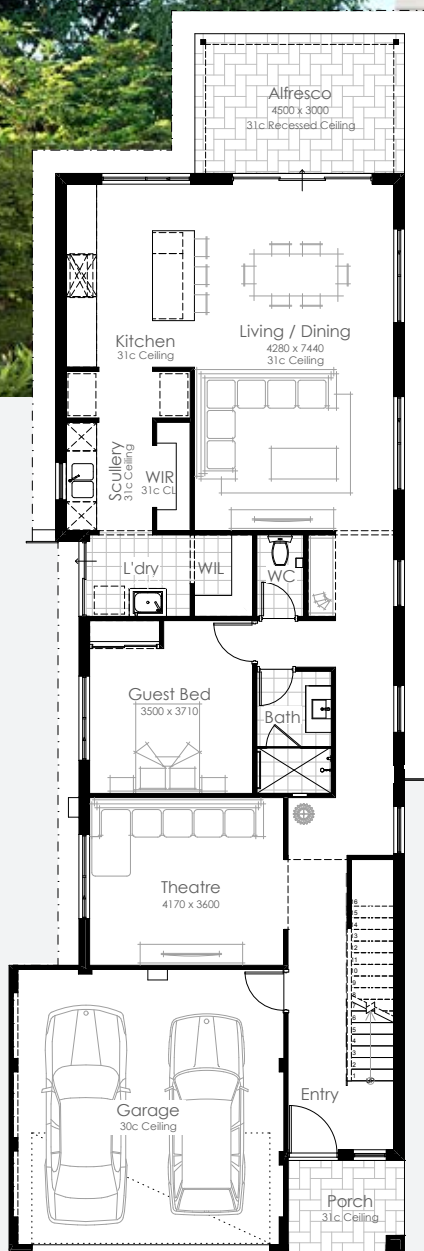
RENOVATIONS

GRANNY FLATS

DEVELOPMENTS

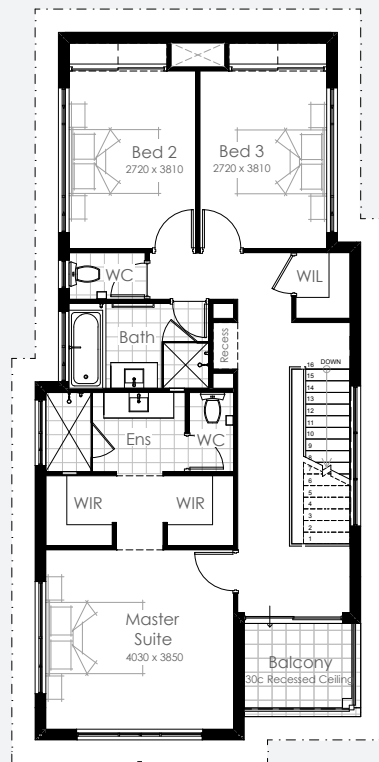
THE MONDO

 4  3  2



TOTAL AREA 287.76m²

Perfect for lots 10m wide.



summithomes.com.au

*Information correct as of 1 July 2021. Plans may be changed or discontinued without notice. Please speak to your New Homes Consultant for details. Images are for illustrative purposes only. BC10689.



SUMMIT
HOMES

NEW HOMES

RENOVATIONS

GRANNY FLATS

DEVELOPMENTS