

NEW HOMES - SOUTH WEST - GRANITE PLATS - RENOVATIONS - DEVELOPMENTS



# The El Mar.

Est.  
1978



**SUMMIT**  
HOMES

## The El Mar. Creating a new class of oceanside luxe.

This considered 4 bedroom, 2 bathroom family abode elegantly blends classic beach house design with contemporary coastal style.

Inside, vast living spaces and a thoughtful, flexible floorplan are beautifully wrapped up in a unique C-shaped design.

Lofty ceiling heights greet guests on entry as they are drawn down a light, airy central passage to the heart of the home. Raked ceilings soar over the expansive living and dining area, drawing in an abundance of natural light.

Overlooking this resort style scene resides a designer kitchen featuring a unique curved stone benchtop, echoing the undulating contours of sand dunes.

This stunning family design has plenty of options for the kids, too. From the break-out activity space in the minor bedroom wing, to the separate games or theatre room, to a fresh outdoor area, kids' needs are well considered.

At the front of the home, an impeccably designed master wing creates a haven of relaxation and indulgence. A huge master bedroom features elegant recessed ceilings, a double-sized walk-in robe, and a sleek ensuite with designer double vanities, luxury freestanding bath beneath a large window, and a double shower. And, just a step away from the bedroom, a huge private retreat - complete with an adjacent bar recess - has the versatility to be anything. Pure bliss!



**The El Mar is a flexible design that can be refined to suit your lifestyle. Ask us about custom floorplan options.**



# The El Mar

On display at 11 Rapallo Grove, Madora Bay

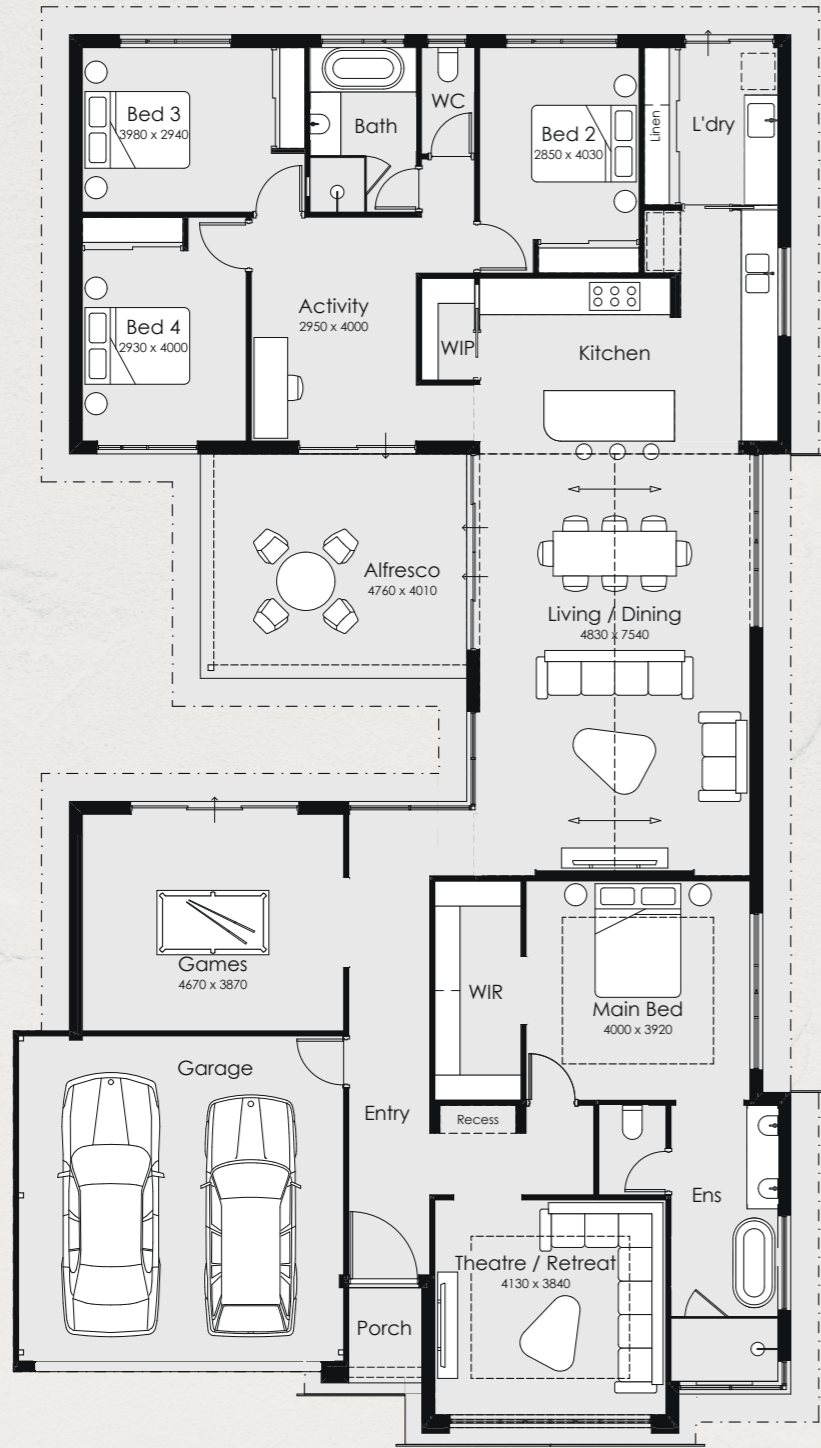
## Showcase Specification

Overall Width: 13.89m  
Overall Length: 24.99m  
Min Block Width: 15m  
Min Block Length: 30m  
Total Area: 289.04<sup>2</sup>

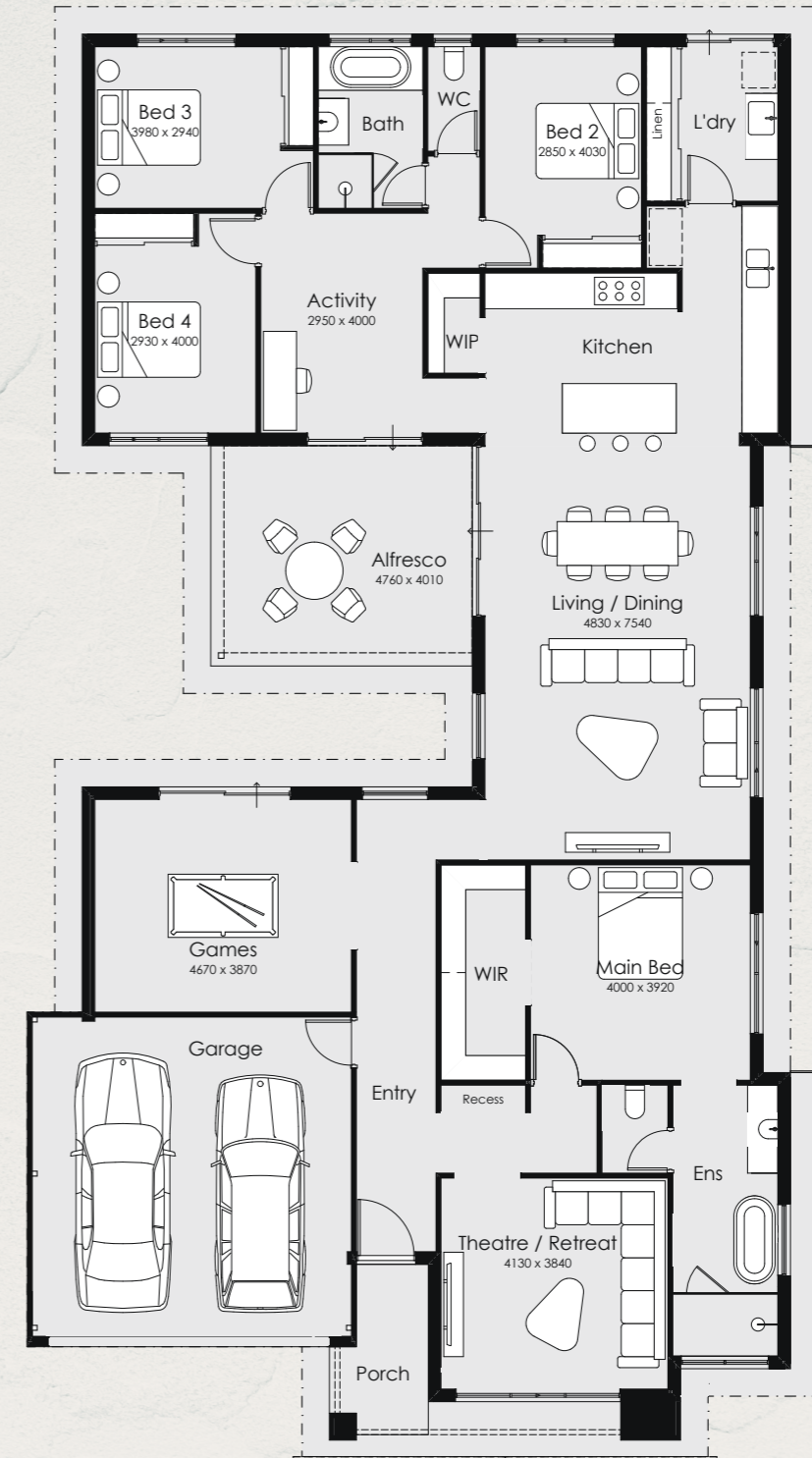
# El Mar Venti

## Benchmark Specification

Overall Width: 13.89m  
Overall Length: 25.59m  
Min Block Width: 15m  
Min Block Length: 30m  
Total Area: 294.38<sup>2</sup>



4 Bedroom  
2 Bathroom  
2 Carport

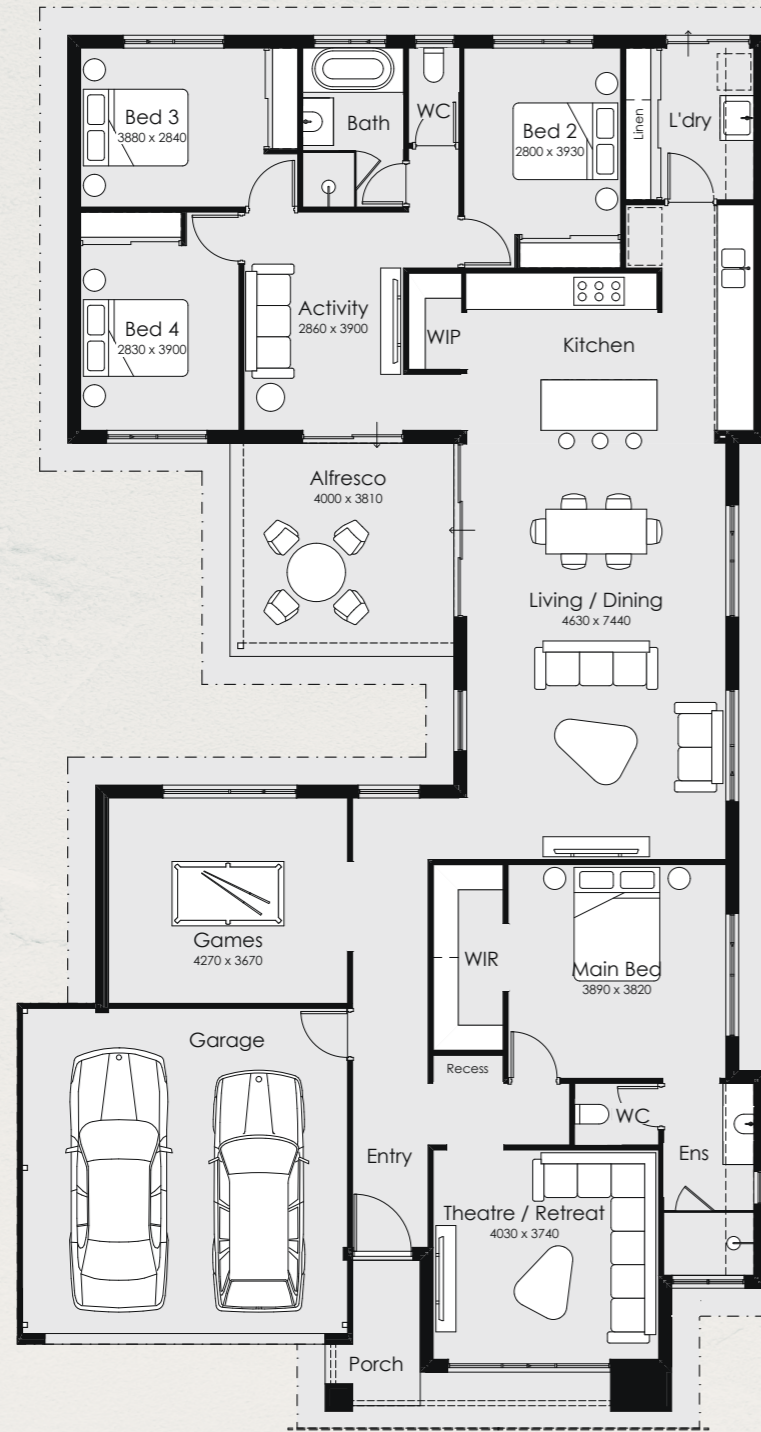


4 Bedroom  
2 Bathroom  
2 Carport

# El Mar Grande

## Benchmark Specification

Overall Width: 13.39m  
Overall Length: 24.59m  
Min Block Width: 15m  
Min Block Length: 30m  
Total Area: 268.34<sup>2</sup>



4 Bedroom  
2 Bathroom  
2 Carport

## Built around people.

Our friendly and experienced team is passionate about building homes for WA families. Customer service is at the very heart of everything we do at Summit Homes. This means we will always strive to give you the best care and attention, creating an unrivalled new home building experience.



## Why we're different.

The Summit Homes difference starts with our ability to tailor the building journey to your individual needs. Your dream home is crafted to reflect your specific style and your family's ideal lifestyle. With our sophisticated and thoughtful design, high quality and contemporary styling, and industry-leading building practices, we create a home that is quite simply, exceptional.

# When you sum it up, Summit comes out on top.

[summithomes.com.au](http://summithomes.com.au)



Locally owned  
& operated for  
over 40 years



Trust is our  
proudest  
achievement



Inspiration  
made easy at  
our Style Studio



WA's Project Builder  
of the Year  
2021 & 2022



We love  
what we do



Regular updates  
& progress photos  
via @Home Portal



WA's Professional  
Major Builder  
2020 & 2021



Quality,  
at every step

NEW HOMES - SOUTH WEST - GRANNY FLATS - RENOVATIONS - DEVELOPMENTS

Est.  
1978

Truecore®



SUMMIT

HOMES