

NEW HOMES - SOUTH WEST - GRANNY FLATS - RENOVATIONS - DEVELOPMENTS



# The Whitewood.

Est.  
1978



**SUMMIT**  
HOMES

## The Whitewood. Immerse yourself in a modern beach oasis.

Upon entry, a gracious raking ceiling sets the stage for the extraordinary features that lie within. Stepping inside, you'll be captivated by the generous 33c entry ceiling height. Natural light takes centre stage with four strategically positioned skylights, bathing the dining and living areas in a warm and inviting radiance throughout the day.

The Whitewood unveils a private retreat – a meticulously planned home-owner wing strategically located at the front of the home. Within this sanctuary, you'll discover a study and a theatre room complete with a bar recess, providing a haven for your work or leisure activities. The master suite within the Whitewood is a luxurious sanctuary, featuring a spacious double walk-in robe and a hotel style ensuite with double vanities.

Venturing outdoors, the alfresco area in the Whitewood stands as a genuine outdoor haven. Its raking ceiling, exposed beams, and stacker doors create a seamless transition between indoors and outdoors. Whether you're sipping your morning coffee or hosting a lively barbeque, this space is designed for year-round enjoyment.

In the Whitewood, you'll discover a four bedroom, two bathroom home that not only celebrates the art of modern living but also masterfully combines style with functionality.



The Whitewood is a flexible design that  
can be refined to **suit your lifestyle.**  
Ask us about custom floorplan options.



# The Whitewood

On display at 18 Dawes Way, Mandogalup

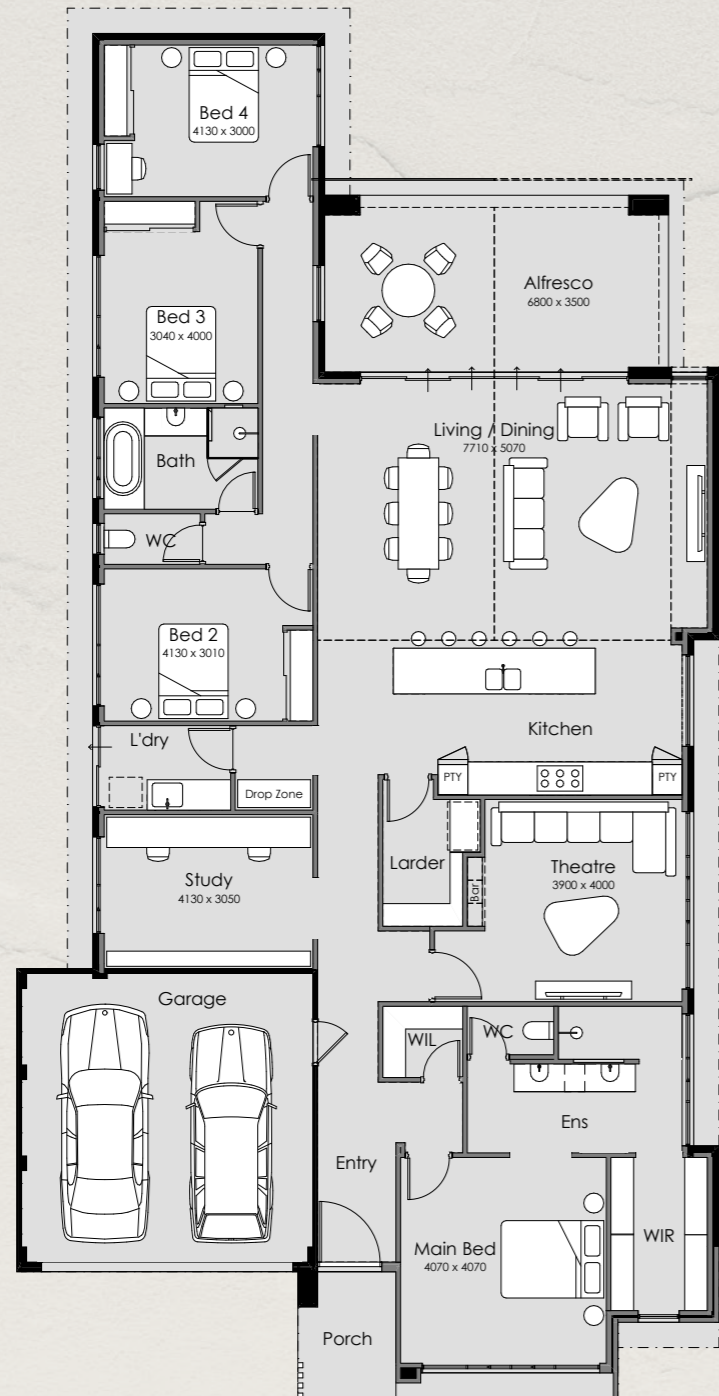
## Showcase Specification

Overall Width – 13.89m  
Overall Length – 26.99m  
Min Block Width – 15.00m  
Min Block Length – 30.00m  
Total Area – 294.58m<sup>2</sup>

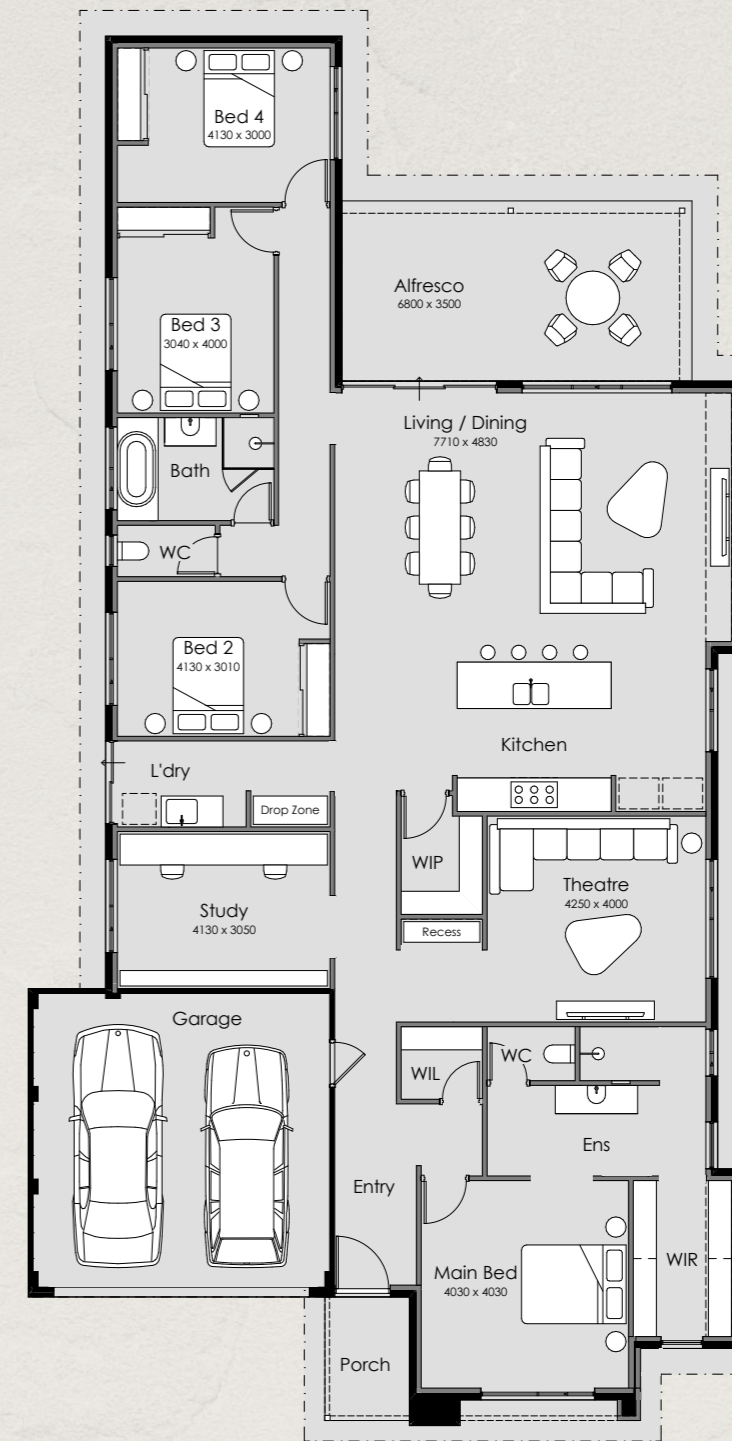
# Whitewood Venti

## Benchmark Specification

Overall Width – 13.89m  
Overall Length – 26.99m  
Min Block Width – 15.00m  
Min Block Length – 30.00m  
Total Area – 293.87m<sup>2</sup>



4 Bedroom  
2 Bathroom  
2 Garage

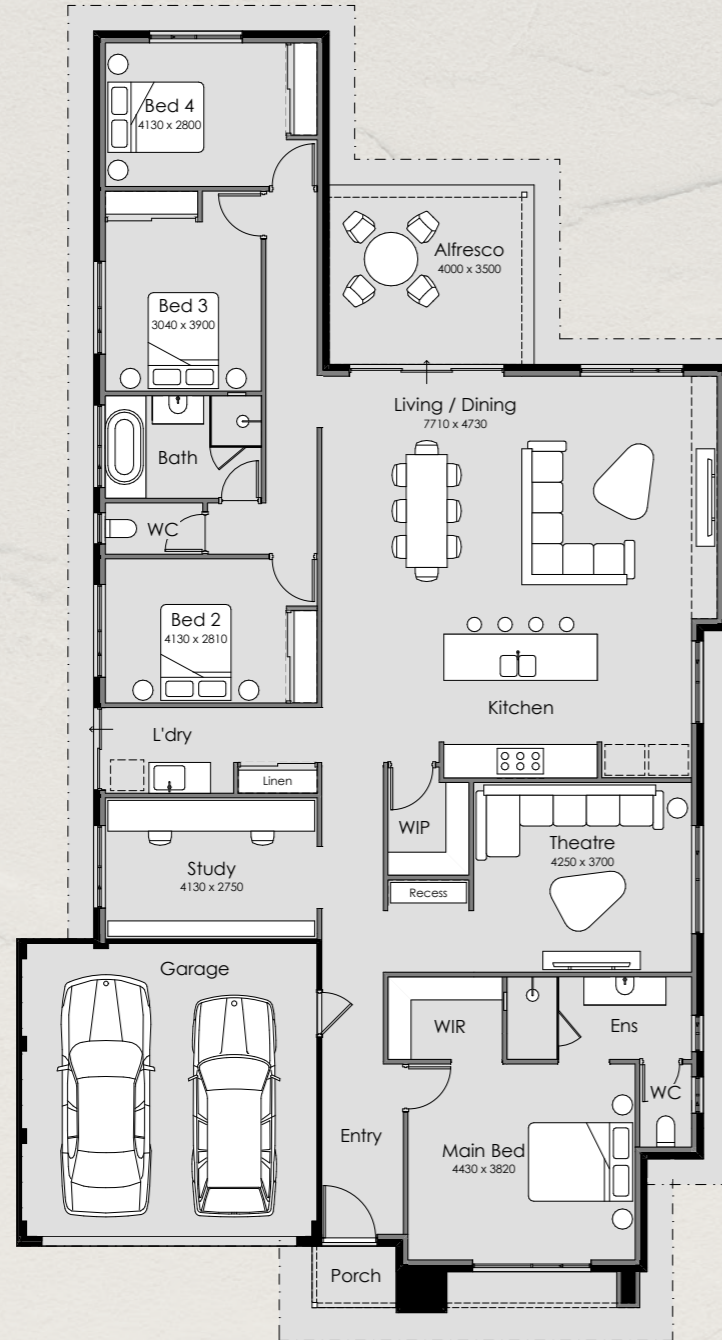


4 Bedroom  
2 Bathroom  
2 Garage

# Whitewood Grande

## Benchmark Specification

Overall Width – 13.89m  
Overall Length – 24.99m  
Min Block Width – 15.00m  
Min Block Length – 30.00m  
Total Area – 262.35m<sup>2</sup>



4 Bedroom  
2 Bathroom  
2 Garage

## Built around people.

Our friendly and experienced team is passionate about building homes for WA families. Customer service is at the very heart of everything we do at Summit Homes. This means we will always strive to give you the best care and attention, creating an unrivalled new home building experience.



## Why we're different.

The Summit Homes difference starts with our ability to tailor the building journey to your individual needs. Your dream home is crafted to reflect your specific style and your family's ideal lifestyle. With our sophisticated and thoughtful design, high quality and contemporary styling, and industry-leading building practices, we create a home that is quite simply, exceptional.

# Step up to a Summit.

summithomes.com.au



Locally owned  
& operated for  
over 40 years



Trust is our  
proudest  
achievement



Inspiration  
made easy at  
our Style Studio



WA's Project Builder  
of the Year  
2021 & 2022



We love  
what we do



Regular updates  
& progress photos  
via @Home Portal



WA's Professional  
Major Builder  
2020, 2021 & 2023



Quality,  
at every step

NEW HOMES - SOUTH WEST - GRANNY FLATS - RENOVATIONS - DEVELOPMENTS

Est.  
1978

Truecore®



SUMMIT

HOMES